

OFFERS OVER

**£385,000**

**Crosskirk Crescent**  
Strathaven, ML10 6FG



## PROPERTY SUMMARY

Advantageously positioned upon a substantial West facing plot within the well-regarded, established address of Crosskirk Crescent is this beautiful, detached, 4/5-bedroom, family home. Set within generous, mature gardens that have evidently had an abundance of time and love invested by the current owners, this lovely home offers spacious and versatile family living, with the addition of approved planning to extend should a new owner wish to do so.

The well-appointed layout of apartments comprises; welcoming reception hallway with under-stairs storage, two-piece cloaks/wc, formal lounge with attractive bay window and feature stone fireplace with living flame gas fire inset, conservatory currently utilised as sitting room with access to rear garden, dining room, modern fitted kitchen with integrated appliances, utility room, and home office that could easily serve as a fifth ground floor bedroom if required. On the upper level are four well-proportioned bedrooms; three of which benefit from fitted storage, the master with its own modern three-piece en-suite bathroom with hand-held over-bath shower. The first-floor accommodation is completed by a modern three-piece shower room with rainfall shower, hall storage, and access to attic space.

This fabulous family home further benefits from gas central heating, double glazing, driveway with ample space for several cars, and a detached double garage. The impressive, well-established gardens offer an incredibly pretty space to

5



2



3







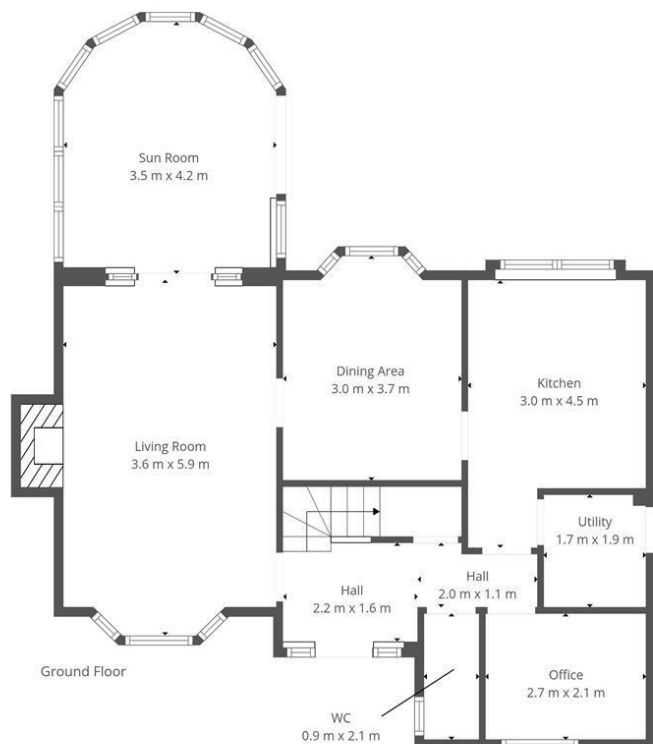












This Floorplan Is Intended To Give An Indication Of The Layout Only.

## LOCAL AUTHORITY

South Lanarkshire

## TENURE

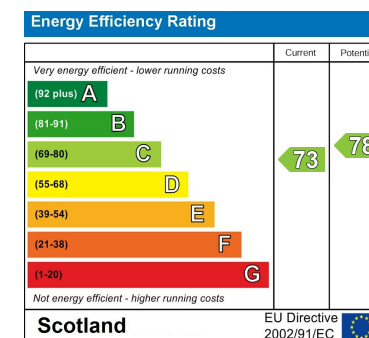
Freehold

## COUNCIL TAX BAND

G

## VIEWINGS

By prior appointment only



Agents Note: Whilst every care has been taken to prepare these particulars, they are for guidance purposes only. All measurements are approximate and are for general guidance purposes only and whilst every care has been taken to ensure their accuracy, they should not be relied upon and potential buyers/tenants are advised to recheck the measurements



**cruive**  
ESTATE AGENTS

**OFFICE ADDRESS**  
9 Townhead Street  
Strathaven  
ML10 6AB

**OFFICE DETAILS**  
01357 510088  
judithmcgill@cruive-  
estateagents.co.uk